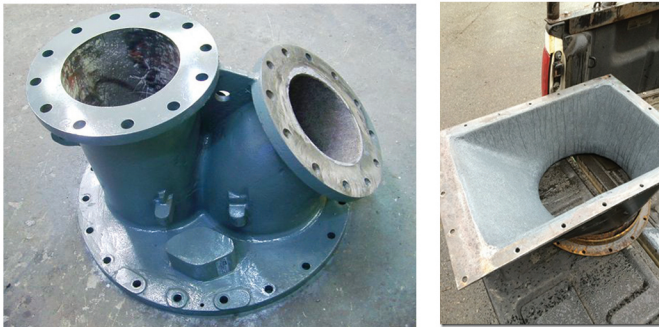


Why throw away your Profits!

Overhaul your parts with our "Award Winning" Ceramic Wear Lining



Overhauled Dust Collection Pipe components - currently running over 3 years with no noticeable wear that offers over 20 times the normal unprotected life expectancy.

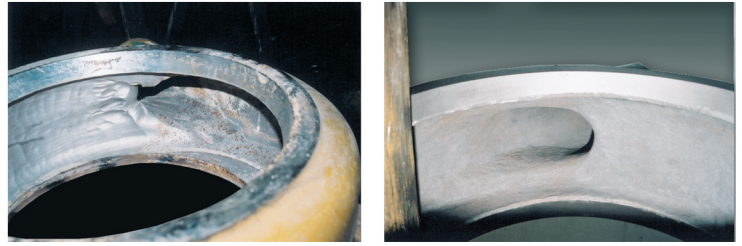


CTI Wear Lining on a Cement Powder Manufacturing Diverter Valve / Industrial Deflector Chute with Wear Lining.

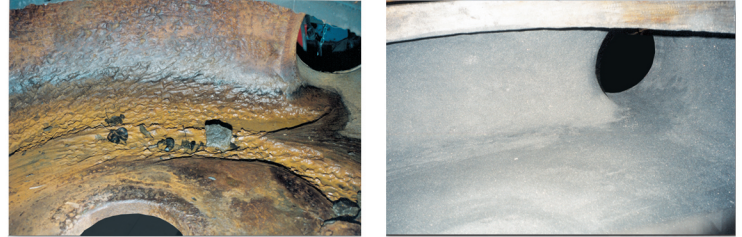


CTI Wear Lining on a 28 inch Dredge Pump and Suction Liner.

Grain Deflector chute shown in green.

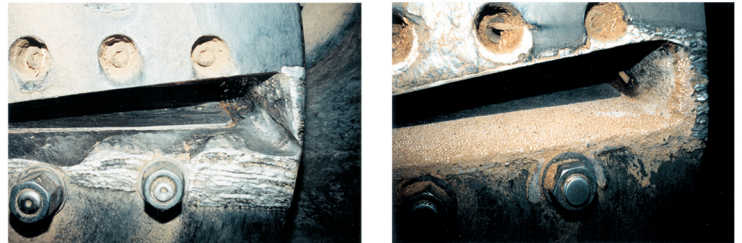


8 x 6 Warman Shell before and after CTI overhaul

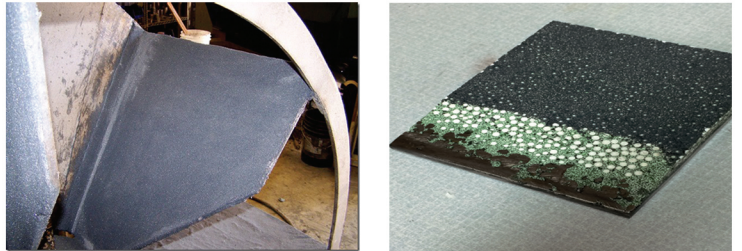


GIW 14 x 12 Slurry Pump after 4,300 hours in Mag Circuit

A CTI Liner in the same Slurry Pump after 4,700 hours at 9% wear



Cedar Wood Chipper with 1.5 years of wear - and 4 years after CTI Liner was installed.



Overhauled Dirty Paddle Fan that was subjected to dust particulates. CTI Lining has proven effective more than 8 times its life expectancy.

Cross-section of CTI Welded Anchoring System

Leader's in the World's first Ceramic Impregnated Welded Coatings - Since 1988
- Contact your local Distributer for more information on our products -



Wear Lining Kits

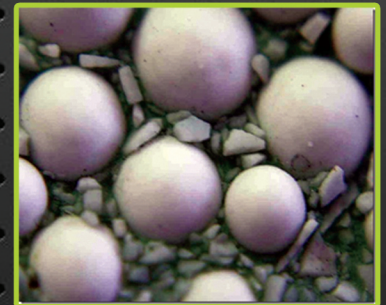
Lead the industry in cost effective repair solutions for persistent "High Wear" areas of metal components on Industrial Equipment.

All CTI wear lining kits are a result of 25 years of research in the field. A precise blend of alumina ceramics and silicon carbides providing more than 90% wear material to epoxy ratio.

All CTI ceramic wear coatings are designed to be user friendly and are easy to apply.



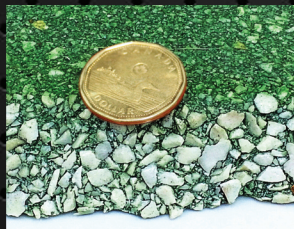
AFTER SANDBLASTING AT CLOSE RANGE FOR 60 SECONDS



CTI-Extreme Load

CTI-EL is an aggressive blend of 1-2mm crushed alumina ceramic fines combined with 3-6 mm crushed ceramics.

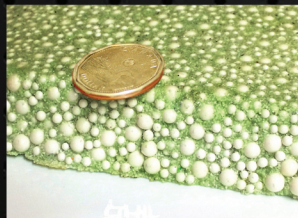
This combination is highly effective in heavy abrasion applications including dredge & slurry pumps and mineral processing.



CTI-Heavy Load

CTI-HL is a unique blend of 1-2 mm crushed alumina ceramic fines with 2-3 mm and 5-6 mm alumina ceramic beads.

Used for extreme sliding abrasion such as dredge & slurry pumps, chutes, wear plates, cyclones, elbows, mineral processing and dust collection pipes.



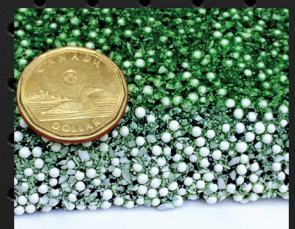
Coverage

A 15 lb. Kit applied at a recommended thickness of 3/8" (1 cm) covers 4 square feet

CTI-All Purpose

CTI-APL is a composition of 1-2 mm crushed alumina ceramic fines with 2-3 mm beads.

It is extremely effective in heavy abrasion applications including dredge & slurry pumps, paddle fan components and liners, chutes, deflectors, hoppers, screw conveyors, wood mill blast areas, cyclones, coal processing, grain handling, dust collection, bulk processing and mineral processing.



CTI-Abrasion Control

CTI-AC is a special blend of 1-2 mm crushed alumina ceramic fines.

A great product for a variety of applications that include; paddle fan components & liners, chutes, deflectors, hoppers, screw conveyors, wood mill blast areas, cyclones, coal processing, grain handling, dust collection, bulk processing, mineral processing.

